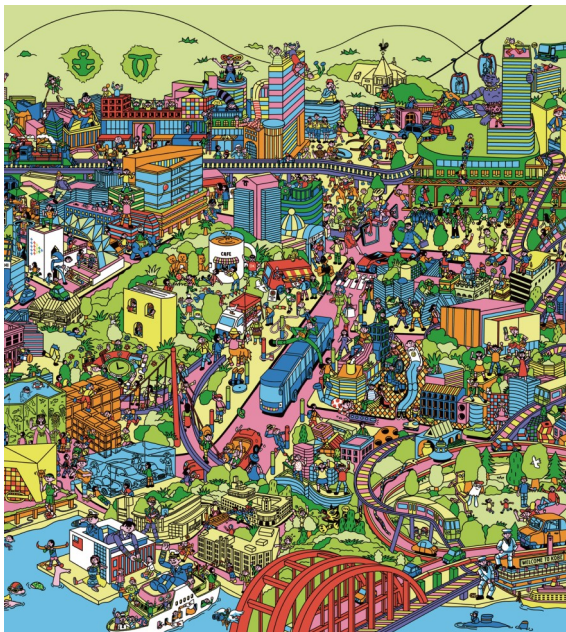


# K O B E

Kobe PR Paper English October 2022

What will Kobe look like by 2030?



If you have any questions about ward office procedures, financial support for raising children, etc.

**Call the Kobe International Community Center (KICC)!**

☎ 078-742-8721 (11 languages)



↑ Tap here to visit the website!



Edited by: Kobe City International Division

# What Will Kobe Look Like by 2030?

In order to help make Kobe an even more popular city, the Sannomiya area is being transformed into a pedestrian-focused district. What will Kobe's downtown look like in the future?



## ◆ A more people-friendly Sannomiya

### B: Sankita area (Completed in 2021)

A popular meetup spot, Sankita Street is now pedestrian-only and features outdoor seating on the promenade.



## ◆ A more explorable Sannomiya

### I: Kobe Port Museum (Completed in 2021)

This building is home to *átoa*, a unique urban aquarium, and other facilities that accentuate Kobe's waterfront area.

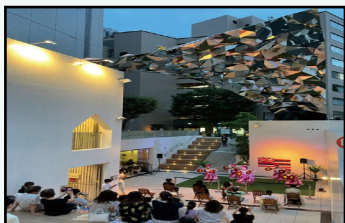


# What Will Kobe Look Like by 2030?

## ◆ A more fun & convenient Sannomiya

### K: Sannomiya Platz (Completed in 2020)

Located between Sannomiya and Motomachi, this open-air space is great for relaxing in and also hosts various music and food events as well as exhibitions.



## Influenza Vaccination Information

Influenza cases are expected to rise this year based on current trends in other countries. Kobe City is providing vaccination subsidies to certain residents, so please be sure they get their flu vaccination this season. (They do not need to space out their Covid-19 and flu vaccinations.) Flu vaccination period: October 1, 2022 - January 31, 2023.

### Out-of-pocket costs for flu vaccination

| Eligibility  | Out-of-pocket                   |
|--|---------------------------------|
| Children (1-12 years old)  | Vaccination cost minus 2000 yen |
| Seniors (① Age 65+ or ② Age 60-64 with certain disabilities)   | 1,500 yen                       |
| Seniors (① or ②) in a household receiving public assistance, or a household not subject to paying resident tax | Free                            |

**Details here!**  
(JP) ↓



# COVID-19 Vaccination Information

## Vaccinations for the Omicron variant begin

Vaccines for the Omicron variant are available from September 27. Please make an appointment through a hospital, clinic, or the Kobe City website.

[Details & reservation info here! \(JP\)→](#)



## Vaccine brands used (from Sep. 27)

|                                | Pfizer | Moderna | Takeda |
|--------------------------------|--------|---------|--------|
| Clinic/hospital                | ○      | ○       |        |
| Vaccination center             | ○      | ○       | ○      |
| Large-scale vaccination center | ○      |         |        |

\*Vaccination centers are only offering vaccines for the Omicron variant.

## Vaccine effects

Since this vaccine also contains substances that target the Omicron variant, it is more effective than the regular vaccine for preventing severe symptoms. It should also prevent the spread of infection and prevent the onset of symptoms.

## If you have any questions about scheduling a Covid-19 vaccination appointment

 **Kobe City Covid-19 Vaccination Call Center**

**TEL: 078-277-3320 (Multilingual support available)**

**(Weekdays 8:30 am-8 pm,  
Weekends & holidays 8:30 am-5:30 pm)**

You can call this number to get your vaccination voucher/certificate reissued.

# Enjoy modern art in nature Rokko Meets Art 2022

Come to Mt. Rokko for the 13th Rokko Meets Art event. In this unique art exhibition, you can enjoy a lovely stroll in the mountains while viewing interesting pieces of modern art. Cleanse your body with fresh mountain air while enriching your soul with art!



## Delicious dishes for a limited time!

At restaurants on Mt. Rokko, you can try dishes made using local Rokko miso paste.



**Period:** Until November 23

**Time:** 10 am - 5 pm

**Fee:** Admission required

**Details  
here!  
(JP)→**



## Creating a Dementia-Friendly City

As one becomes older, there is a risk of developing dementia. It is predicted that there will be about 1 in 5 seniors (age 65+) with dementia in Japan in 2025.

### What is the Kobe Dementia Model?

Kobe residents aged 65 and over can get tested for dementia for free. If dementia is detected, they can qualify for assistive care and other helpful services.

In addition, they will be enrolled in free liability insurance, so they can receive support in the event of an accident.

**Details about the free health  
exam voucher here! (JP)→**



# Childcare Facility Applications for April 2022 Admission!

**1st round:** Oct. 20 - Nov. 30, 2022

**2nd round:** Dec. 1, 2022 - Feb. 14, 2023

Instead of going to the ward/branch office,  
you can also apply online.

**Details for applying online! (JP)→**

To learn more about the application,  
contact the child welfare supervisor of the  
ward/branch office where your first-choice  
childcare facility is located.

**Get advice about childcare services at  
these ward/branch office service desks!  
(JP)→**

**Find more info about types of facilities,  
admission requirements, application  
details, paperwork schedules, etc.! (JP)→**



## #TransformationofKobe Seishin-Chuo

Not only is the ward office now closer to the station,  
but there's also a new cultural center!

### #1 New Nishi Ward Office building

The 3rd floor features "Cobeya", and  
exchange space that regularly hosts  
a local produce/product market.



### #2 Nadeshiko Arts Center

#### ■ Seishin-Chuo Hall

It includes an auditorium with great  
acoustics that seats 500, as well as  
practice rooms for music and dance.



#### ■ Nishi Library

It's the biggest library in Kobe & has  
the largest collection.

